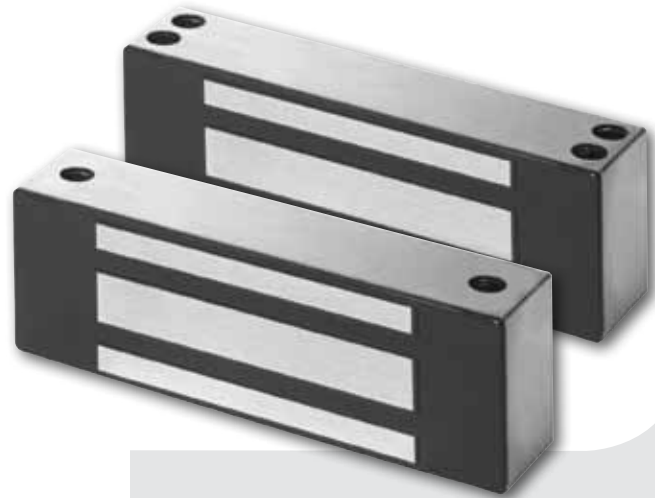




40/70 Series Electromagnetic Locks

Overview

Schlage introduces the integrator's answer to retrofit needs for electromagnetics locks. These "Full Featured" electromagnetic locks are easy to stock, easy to select and easy to install. With common templating and standard features, the 40 and 70 Series Electromagnetic Locks for retrofit make sense for virtually every application.



System Components
40/70 Series Mag Lock

Features and Benefits

- Stainless steel housing - standard
- Low amp draw:
 - 70 Series - .12A @ 24 VDC, 25A @ 12 VDC
 - 40 Series - .15A @ 24 VDC, 32A @ 12 VDC
- Simplified armature installation
- Strong holding forces:
 - 70 Series - BHMA Grade 1 Certified 1000 lb. rating
 - 40 Series - BHMA Grade 1 Certified 500 lb. rating
- Universal Header Bracket (UHB)
- Double magnet available with 70 series
- UL 10C - 1 Hour Fire Rated
- UL1034 Certified: Burglary-Resistant Electronic Locking Mechanisms

40 Specifications	
Holding Force	BHMA 500 lb rating
Input Voltage	12/24 VDC
Current Draw	.32A @ 12 VDC .15A @ 24VDC
Length	8"
Height	1 7/8"
Depth	1 5/8"
Weight	3.5 lbs.
Certifications	ANSI/BHMA A156.23, UL10C & UL1034

70 Specifications	
Holding Force	BHMA 1000 lb rating
Input Voltage	12/24 VDC
Current Draw	.25A @ 12 VDC .12 @24 VDC
Length	8"
Height	3"
Depth	1 7/8"
Weight	7.5 lbs.
Certifications	ANSI/BHMA A156.23, UL10C & UL1034

72 Specifications	
Holding Force	BHMA 1000 lb rating per door leaf
Input Voltage	12/24 VDC
Current Draw	.50A @ 12 VDC .25A @ 24 VDC
Length	22"
Height	3"
Depth	1 7/8"
Weight	15 lbs.
Certifications	ANSI/BHMA A156.23, UL10C & UL1034

Filler Plates
Filler Plates Available in 628 Satin Aluminum or 335 Satin Black Finishes
1-1/4" x 1/8"
1-1/4" x 1/4"
1-1/4" x 3/8"
1-1/4" x 1/2"
1-1/4" x 5/8"

ORDERING INFORMATION

- 40** Single Lock
- 70** Single Lock
- 72** Double Lock

ACCESSORIES

- HDB70** Herculite Door Bracket
- HDB40** Herculite Door Bracket
- UHB** Universal Header Bracket
- HEB** Header Extension Bracket
- CWB70** Concrete/Wood Bracket
- CWB40** Concrete/Wood Bracket
- ASB70** Aluminum Spacer Brackets
- ASB40** Aluminum Spacer Brackets
- DC70** Dress Cover
- DC40** Dress Cover
- OSA** 1/4" offset Armature Strike

FINISHES (ACCESSORIES ONLY)

- 628** US28 Satin Aluminum, Anodized (standard)
- 605** US3 Bright Brass (Dress Cover Only)
- 335** US19 Satin Black, Anodized

